

**AVIATION
DEVELOPMENT
CORPORATION**

1305 NW 200th Street

Seattle, WA 98177

(206) 546-3011

**OIL FILTER INSTALLATION INSTRUCTIONS
& AIRCRAFT DOCUMENTS**

STC No. SA00402SE

THIS DOCUMENT CONTAINS PROPRIETARY INFORMATION OF AVIATION DEVELOPMENT CORPORATION AND ITS RECEIPT OR POSSESSION DOES NOT CONVEY ANY RIGHTS TO REPRODUCE, DISCLOSE ITS CONTENTS, OR TO MANUFACTURE, USE OR SELL ANYTHING IT MAY DESCRIBE. REPRODUCTION, DISCLOSURE, OR USE WITHOUT SPECIFIC WRITTEN AUTHORIZATION OF AVIATION DEVELOPMENT CORPORATION IS STRICTLY FORBIDDEN.

**NOTICE
THESE DOCUMENTS MUST BE KEPT WITH AIRCRAFT RECORDS**

5 YEAR LIMITED WARRANTY

ADC Remote Spin-on Filter System

AVIATION DEVELOPMENT CORPORATION (ADC), warrants the ADC Remote Spin-on Filter System for a period of five (5) years from the date of original retail purchase (installation) to be free of any manufacturing defects. This warranty does not apply to the spin-on filter itself, any O-rings, oil lines or fittings.

ADC will provide the necessary parts and labor to repair the products contained in the kit at no extra charge to the customer for 5 years after installation.

ADC will not be responsible for the installer's workmanship and/or affect on the kit materials.

Warranty service shall be obtained by contacting ADC prior to any warranty service being performed. The product will be repaired and returned to service as soon as reasonably possible. This warranty covers normal customer use and does not cover damage which occurs in shipment or failures which result from alteration, accident, abuse, installation, aircraft or engine misuse, improper maintenance, undue exposure to weather or corrosive environments, or handling deemed improper by ADC.

ADC reserves the right of continuous product development without obligation to install changes in previously manufactured products.

NOTICE: ADC will not be liable for any loss, injury, or damages to persons or property resulting from defects in the kit, nor shall ADC be liable for direct, indirect, incidental, special, or consequential damages of any kind incurred by use of the kit, whether or not the kit shall prove to be other than as warranted (some states do not allow the exclusion or limitation of incidental or consequential damages, so the above limitation or exclusion may not apply to you). This warranty gives you specific legal rights and you may also have other rights which vary from state to state.

Aviation Development Corporation
1305 N.W. 200th Street
Seattle, WA 98177
(206) 546-3011

**Installation Instructions for the ADC Spin-on Filter Adapter
on Beech Models 33, 35, & 36. Aircraft Spec. No. 3A15 & A-777**

1. Locate Filter on Firewall:
 - a. Refer to Drawing No. 50020 to locate bracket, Part No. 50002-1 on firewall.
 - b. Using the bracket as a template, mark and drill four ¼" holes in removable access panel.
2. Bolt bracket to firewall. See Drawing. No. 50000.
3. Bolt adapter, Part No. 50001, to bracket. See Drawing No. 50010.
4. Adapter Installation:

Remove oil screen assembly from engine and clean out cavity. Install adapter, Part No. 700113 for Continental "E" series engines or Part No. 700111 for 470 or 520 engines. On Continental engines with a factory-installed spin-on system, use adapter Part No. 700110 which also is used on Lycoming engines with spin-on filters. On Lycoming engines without spin-on filters, use adapter, Part No. 700117 (see report No. I700117). Torque spin-on adapter to **21-25 ft. lbs.** Torque all other adapters to **32-35 ft. lbs.** Safety wire adapter.
5. Oil Line Installation—See Drawing No. 7000600:

Attach oil line, Part No. 7000607 from **OUT** port of adapter to **IN** port of filter. Attach second oil line from **IN** port of adapter to **OUT** port of filter.
6. Install spin-on filter; Champion Part No. CH48108, or CH48109. Torque as instructed on outside of filter. Safety wire to one of the filter bracket mounting bolts.
7. Start engine and bring to operating temperature. Shut down engine and check for oil leaks.

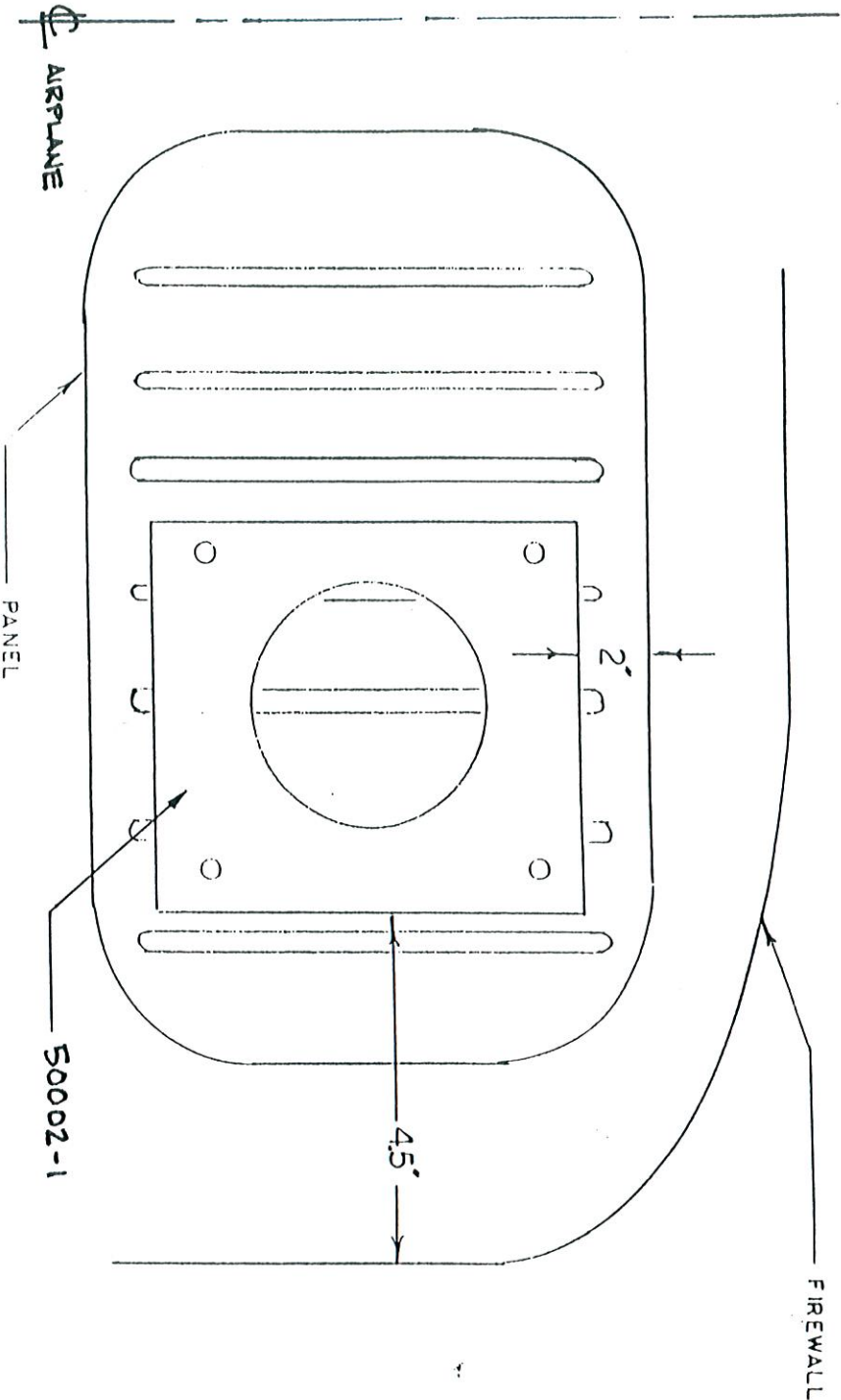
Weight and Balance Data:

Oil filter, bracket & fittings	2.5 lbs
Hoses and fittings	1.5 lbs
Adapter	.8 lbs

This installation must be performed by a licensed A&P mechanic and proper log book entries are to be made. FAA form 337 must be completed and a return to service signed off by an I.A.

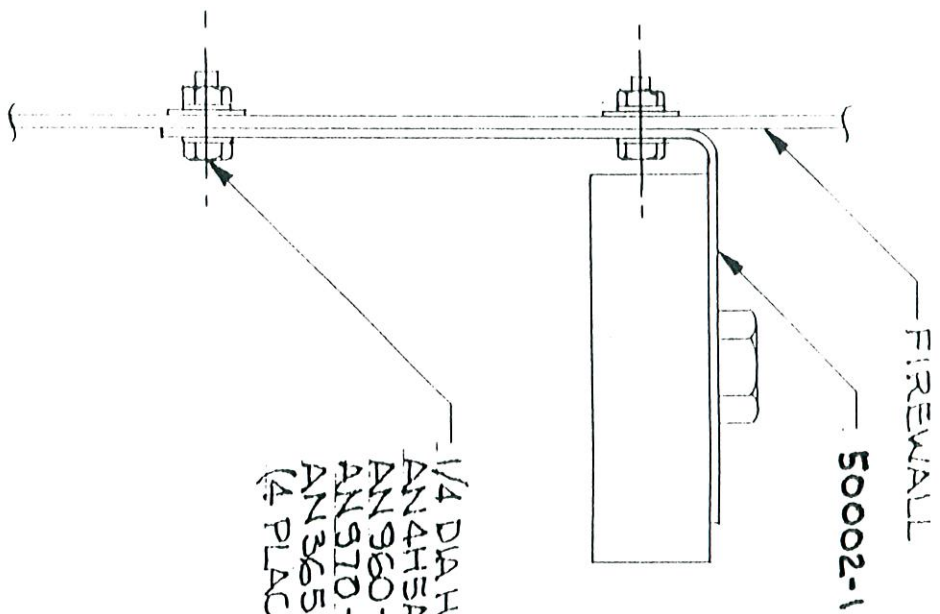
Note: Material, practices and workmanship must be consistent with acceptable practices as per AC 43.13.

TOLERANCE ±.25



FRONT VIEW

AVIATION DEVELOPMENT CORP		DRAWN BY: J.T.N.
1305NW 200th SEATTLE WA 98177		
SCALE: NONE	APPROVED BY:	REVIEWED
DATE: 9/11/96	<i>[Signature]</i>	
BRACKET LOCATION		
BENCH 304A28		DRAWING NUMBER
		50020



1/4 DIA HOLE IN FIREWALL
 AN 4H5A
 AN 960-416 (2)
 AN 970-4 (FAR SIDE)
 AN 365-428A
 (4 PLACES)

INSTL 50000-1

AVIATION DEVELOPMENT CORP

1305 NW 200th, SEATTLE, WA 98177

SCALE: NONE

DATE: 9-2-96

APPROVED BY:

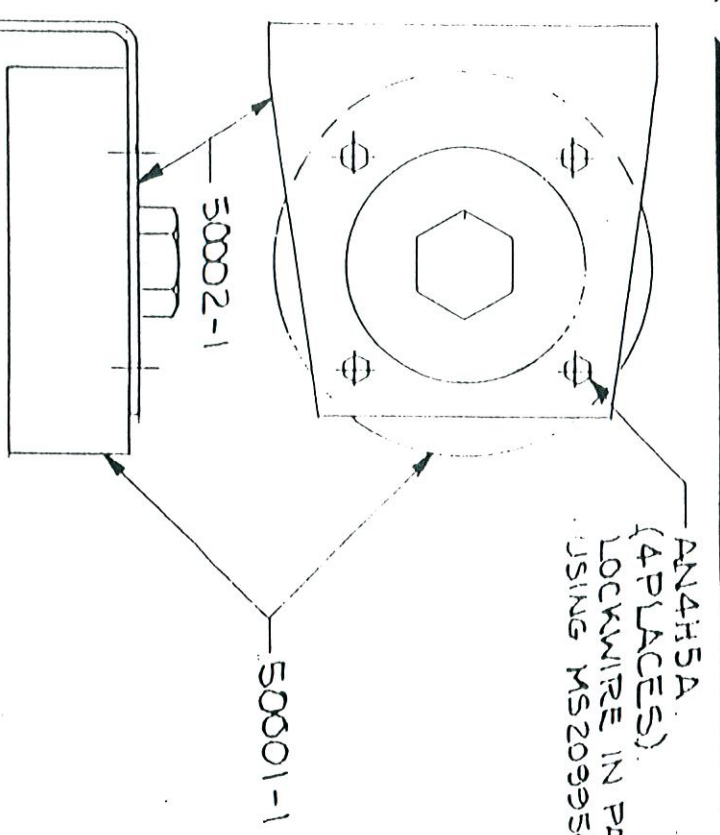
[Handwritten Signature]

DRAWN BY: DOINDEKTER

REVISED

OIL FILTER INSTALLATION -
 SPIN-ON TYPE

DRAWING NUMBER
 50000



AN4H5A
(4 PLACES)
LOCKWIRE IN PAIRS
USING MS20995C032

50001-1

50002-1

ASSY 50010-1

AVIATION DEVELOPMENT CORP

1305 NW 200th, SEATTLE, WA 98177

SCALE: NONE

DATE: 8-29-96

APPROVED BY:

[Signature]

DRAWN BY
INDEXER

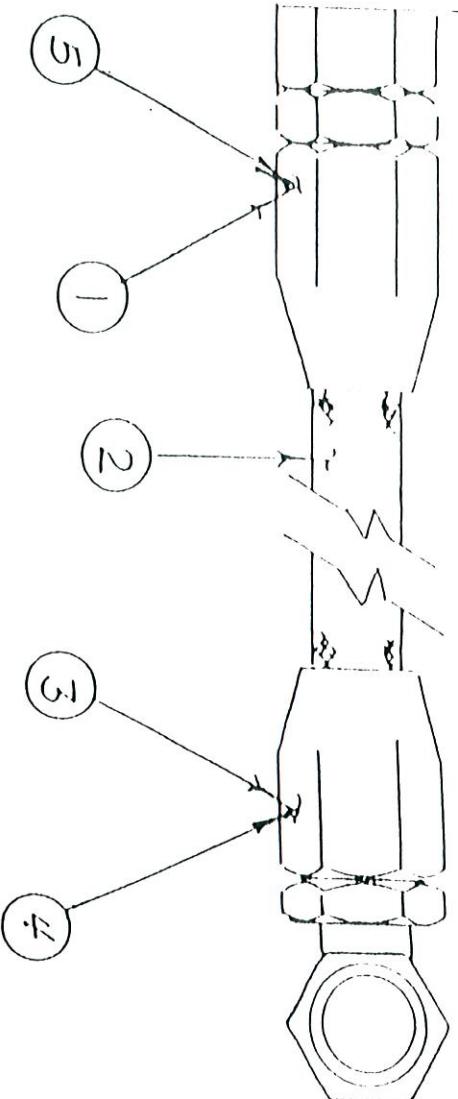
REVISED

ADAPTOR ASSY-OIL FILTER,
SPIN-ON TYPE

DRAWING NUMBER
50010

REVISIONS

REV	DESCRIPTION	DATE	APPROVED BY
A	Change Drawing	11/1/81	J. J. H. [Signature]
B	Add Dim. C to 1.605 (1.600)	1/1/82	J. J. H. [Signature]
C	Add Dim. C to 1.607 (1.600)	1/1/82	J. J. H. [Signature]
D	Add Dim. C to 1.608	3/1/82	J. J. H. [Signature]
E	Add Dim. C to 1.609	1/1/82	J. J. H. [Signature]



Item 5 P/N 4411-8 Steel Fitting
 Item 4 P/N 190296-8 Steel Fitting
 rated at 21000 PSI, 37° JIC-SAE,
 may also be used.

Note:
 Dimension A may be longer if needed
 for better routing of hose.

PART NO	DIM. A	QTY	A/C	MODEL	BY
7000601	6.5"	2	GRUHN. HAS	4511-8	1
7000602	12.0"	1	GRUHN. HAS	190296-8	2
7000603	10.0"	1	GRUHN. HAS	4411-8	3
7000604	18.0"	1	C-172	PA-28	1
7000605	45.0"	2	C-180	182-185	2
7000606	22.0"	1	PA-28		1
7000607	38.0"	2	BECH	33-35-36	2
7000608	16.0"	1	BECH	BARON	1
7000607	38.0"	2	ROBISON	R 22	2
7000609	28.0"	2	ARONCH		2

5	4411-8	STEEL	CAD-PLATED	AERONAUT OR EQUIV.
4 <td>190296-8 <th>STEEL</th> <th>CAD-PLATED</th> <th>AERONAUT OR EQUIV.</th> </td>	190296-8 <th>STEEL</th> <th>CAD-PLATED</th> <th>AERONAUT OR EQUIV.</th>	STEEL	CAD-PLATED	AERONAUT OR EQUIV.
1 <td>4511-8D <th>ALUM.</th> <th>ANODIZED</th> <th>AERONAUT OR EQUIV.</th> </td>	4511-8D <th>ALUM.</th> <th>ANODIZED</th> <th>AERONAUT OR EQUIV.</th>	ALUM.	ANODIZED	AERONAUT OR EQUIV.
2 <td>303-B <th>RUBBER/ST</th> <th>ANODIZED</th> <th>AERONAUT OR EQUIV.</th> </td>	303-B <th>RUBBER/ST</th> <th>ANODIZED</th> <th>AERONAUT OR EQUIV.</th>	RUBBER/ST	ANODIZED	AERONAUT OR EQUIV.
3 <td>8891-8D <th>ALUM.</th> <th>ANODIZED</th> <th>AERONAUT OR EQUIV.</th> </td>	8891-8D <th>ALUM.</th> <th>ANODIZED</th> <th>AERONAUT OR EQUIV.</th>	ALUM.	ANODIZED	AERONAUT OR EQUIV.

ITEM NO. PART NO. MATERIAL MATL. SPECS. MANUFACTURER

AVIATION DEVELOPMENT CORP.
 1305 NW 200 STREET, WA 98177

SCALE: NONE
 DATE: 9-17-87

APPROVED BY: [Signature]
 DRAWN BY: STM
 REVISED: 3-21-90

HOSE ASSEMBLY

TOLERANCE
 +/- .2" DIM. A

DETAILED NO
 7000600