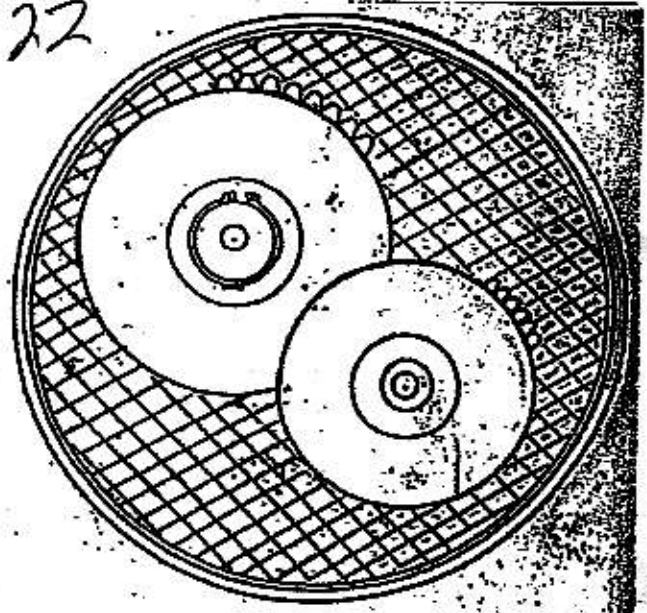


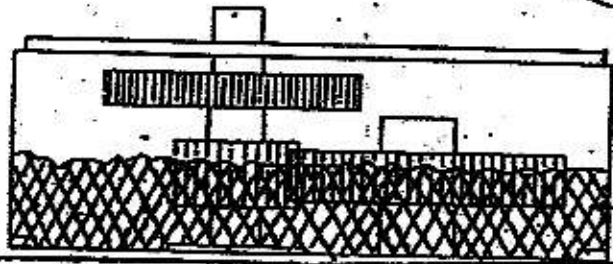
AEROSHELL 22

WARNING

BEFORE ATTACHING MOTOR, PACK THE GEAR HOUSING WITH APPROXIMATELY ONE OUNCE OF MIL-G-81322B LUBRICATING GREASE. FILL WITHIN .00-.100 OF THE HOUSING CENTERLINE. LUBRICATE ONLY TO PARTIALLY COVER LARGE GEAR IN THE HOUSING. GREASE, IF ALLOWED TO ENTER THE MOTOR, WILL CAUSE FAILURE OF THE MOTOR AND DAMAGE TO THE GEAR BOX. THE MOTOR IS NOT SEALED AGAINST GREASE TRAVELING UP THE SHAFT AND INTO THE BRUSH CAVITY. FAILURE TO COMPLY WILL:



VOID WARRANTY



MIL-G-81322B
LUBRICATING GREASE