

**INSTALLATION NOTES**

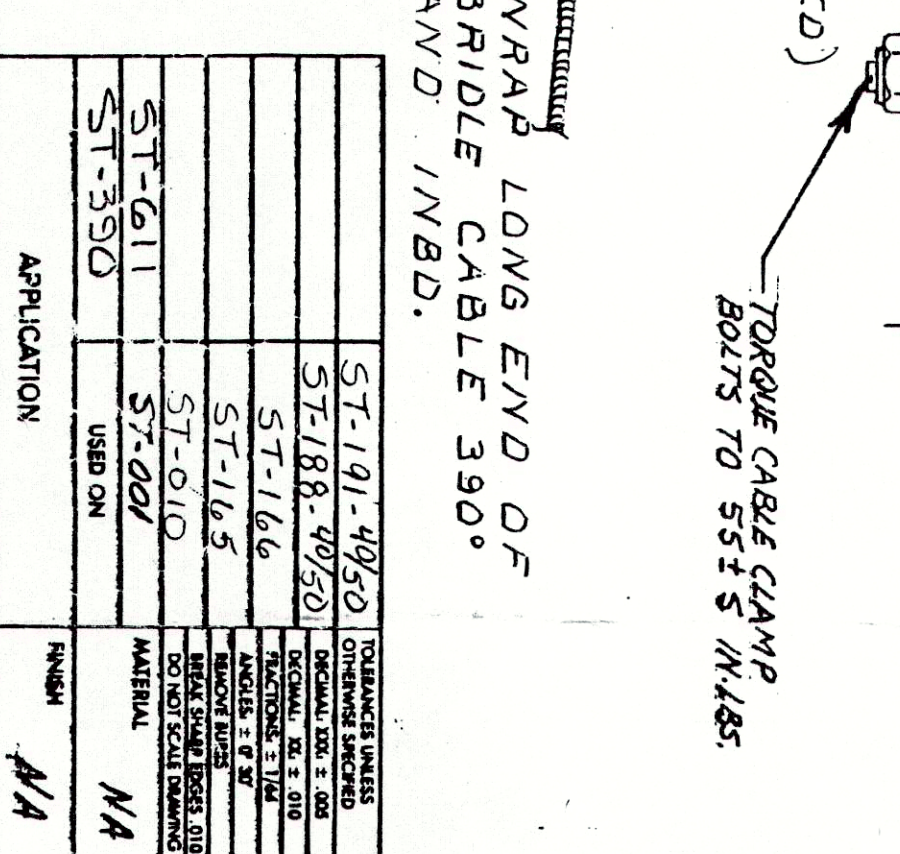
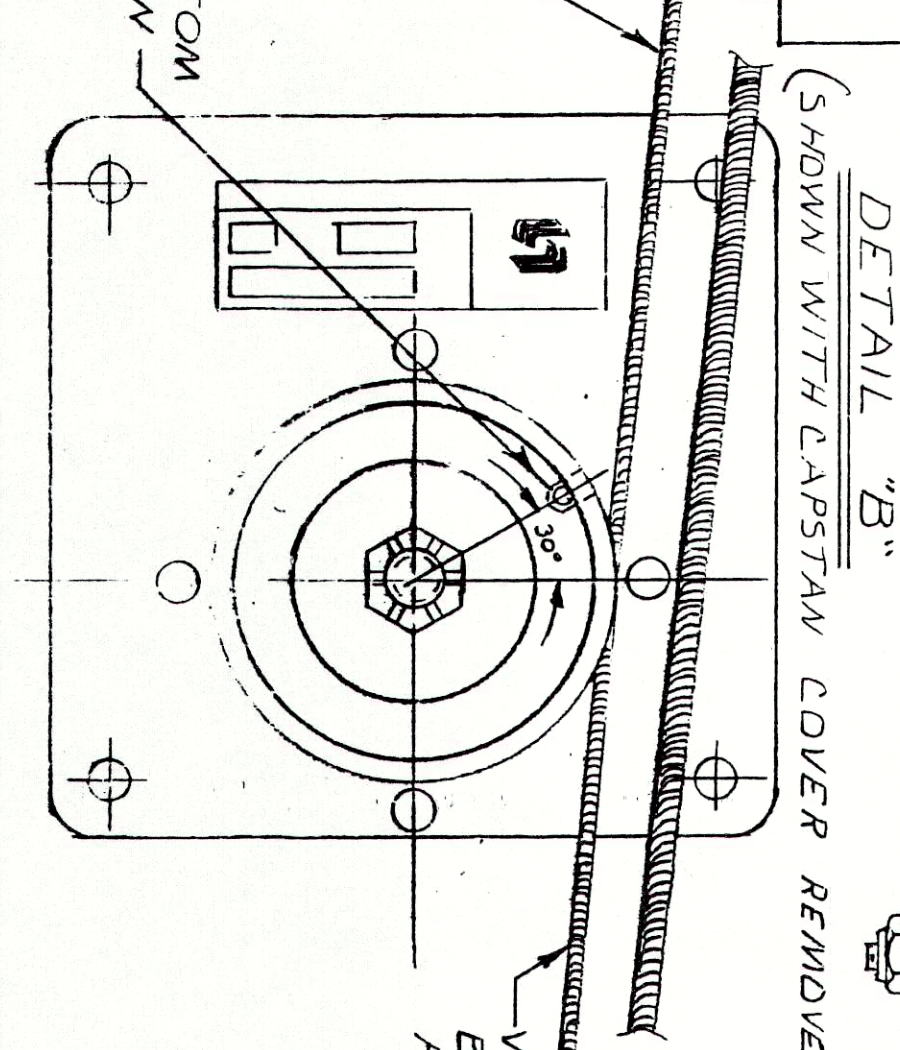
1. LOCATE SERVO SO THAT THE ALLERON CABLE IS CENTERED ON THE CENTERLINE OF THE SERVO AND PARALLEL TO THE BRIDLE CABLE. LOCATE ITEM 2 PRIMARY MOUNTING HOLE PER BULLETIN INSTRUCTIONS.
2. ADJUST THE SERVO POSITION IN THE BRKT'S, AS NECESSARY, SO THAT THE MAKING CABLE CLEANS THE CABLE GUARD ON THE CAPSTAN BY A MINIMUM OF 1/4 INCH.
3. WITH THE ALLERONS IN NEUTRAL POSITION AND WITH THE CENTER BULL ON THE BRIDLE CABLE LOCATED AS SHOWN IN DETAIL "B" AND WRAP TO THE ALLERON CABLE USING ONE GIZZ CLAMP AT THE OUTBOARD END OF THE BRIDLE CABLE AND ONE GIZZ CLAMP INBOARD.
4. REMOVE AND MODIFY EXISTING RUB STRIP PER DETAIL "C", MINIMUM POINTED SLIGHTLY SO THAT BOTH PRIMARY CABLE & BRIDLE CABLE PASS THRU HOLE AND BRIDLE CABLE IS DEFLECTED SLIGHTLY FORWARD IN ORDER TO CLEAR EXIT HOLE IN LEFT FUSELAGE SKIN.
5. THE BRIDLE CABLE CLAMPS CAN BE ADJUSTED (CRANKED) TO ALIGN THE BRIDLE CABLE WITH THE CRANK GROOVES.

**VIEW LOOKING DOWN ON REAR WING SPARK (LEFT SIDE OF AIRCRAFT)**

1. PRIOR TO INSTALLING THE ROLL SERVO, ADJUST THE CLUTCH TORQUE & DETERMINE PROPER PRESSION OF CAPSTAN (ROTATION) IN ACCORDANCE WITH INSTALLATION INSTRUCTIONS.
2. CENTER INSTALLATION IS COMPLETE, ADJUST CENTER TORQUE THROUGH CLUTCH AND DETERMINE THAT DO NOT EXCEED AS A RESULT OF THIS SERVO INSTALLATION.
3. MAINTAIN A MINIMUM OF 5/16" EDGE DISTANCE WHEN DRILLING AT TACHING LOCATIONS WHEN DRILLING BRACKET'S UNLESS OTHERWISE NOTED.

WRAP SHORT END OF BRIDLE CABLE 330° AND OUT BD. (SEE NOTE 3)

APPROX. LOCATION OF BRIDLE CABLE CENTER BALL WITH ALLERONS IN NEUTRAL POSITION. DEPRESS CENTER BALL TO POSITION OF HOLE AND TIGHTEN SET SCREWS.



QTY	ITEM	PART NUMBER	DESCRIPTION
1	1/8	4117	ROLLER
1	17	4116	BUSHING
1	16	1108C832-244	SCREW AN-25-832R24
1	15	60376	BRACKET
1	14	6122	CLAMP BRIDLE CABLE
1	13	7457	NUT-CLIP FIGHTING
1	12	6120	CLAMP, QUADRA, INS 21919WDC, 2
1	11	7003-1	CABLE ASSY, BRIDLE
1	10	6121	CLAMP, BRIDLE CABLE
1	9	1106C832A	NUT AN 365-832
1	8	1201C832A	WASHER AN 360-8
1	7	1108C832-11A	SCREW AN1525-832R17
1	6	6021	BRACKET
3	5	1106C832A	NUT AN 365-1032
3	4	1201C832A	WASHER AN 360-10
1	3	1301C832-04	BRKT AN-3-5A
1	2	6002	BRACKET
1	1	0105-R9	SERVO ASBY

ST-191-1020	ST-188-1020	ST-186-1020	ST-185-1020	ST-184-1020	ST-183-1020	ST-182-1020	ST-181-1020	ST-180-1020	ST-179-1020	ST-178-1020	ST-177-1020	ST-176-1020	ST-175-1020	ST-174-1020	ST-173-1020	ST-172-1020	ST-171-1020	ST-170-1020	ST-169-1020	ST-168-1020	ST-167-1020	ST-166-1020	ST-165-1020	ST-164-1020	ST-163-1020	ST-162-1020	ST-161-1020	ST-160-1020	ST-159-1020	ST-158-1020	ST-157-1020	ST-156-1020	ST-155-1020	ST-154-1020	ST-153-1020	ST-152-1020	ST-151-1020	ST-150-1020	ST-149-1020	ST-148-1020	ST-147-1020	ST-146-1020	ST-145-1020	ST-144-1020	ST-143-1020	ST-142-1020	ST-141-1020	ST-140-1020	ST-139-1020	ST-138-1020	ST-137-1020	ST-136-1020	ST-135-1020	ST-134-1020	ST-133-1020	ST-132-1020	ST-131-1020	ST-130-1020	ST-129-1020	ST-128-1020	ST-127-1020	ST-126-1020	ST-125-1020	ST-124-1020	ST-123-1020	ST-122-1020	ST-121-1020	ST-120-1020	ST-119-1020	ST-118-1020	ST-117-1020	ST-116-1020	ST-115-1020	ST-114-1020	ST-113-1020	ST-112-1020	ST-111-1020	ST-110-1020	ST-109-1020	ST-108-1020	ST-107-1020	ST-106-1020	ST-105-1020	ST-104-1020	ST-103-1020	ST-102-1020	ST-101-1020	ST-100-1020	ST-99-1020	ST-98-1020	ST-97-1020	ST-96-1020	ST-95-1020	ST-94-1020	ST-93-1020	ST-92-1020	ST-91-1020	ST-90-1020	ST-89-1020	ST-88-1020	ST-87-1020	ST-86-1020	ST-85-1020	ST-84-1020	ST-83-1020	ST-82-1020	ST-81-1020	ST-80-1020	ST-79-1020	ST-78-1020	ST-77-1020	ST-76-1020	ST-75-1020	ST-74-1020	ST-73-1020	ST-72-1020	ST-71-1020	ST-70-1020	ST-69-1020	ST-68-1020	ST-67-1020	ST-66-1020	ST-65-1020	ST-64-1020	ST-63-1020	ST-62-1020	ST-61-1020	ST-60-1020	ST-59-1020	ST-58-1020	ST-57-1020	ST-56-1020	ST-55-1020	ST-54-1020	ST-53-1020	ST-52-1020	ST-51-1020	ST-50-1020	ST-49-1020	ST-48-1020	ST-47-1020	ST-46-1020	ST-45-1020	ST-44-1020	ST-43-1020	ST-42-1020	ST-41-1020	ST-40-1020	ST-39-1020	ST-38-1020	ST-37-1020	ST-36-1020	ST-35-1020	ST-34-1020	ST-33-1020	ST-32-1020	ST-31-1020	ST-30-1020	ST-29-1020	ST-28-1020	ST-27-1020	ST-26-1020	ST-25-1020	ST-24-1020	ST-23-1020	ST-22-1020	ST-21-1020	ST-20-1020	ST-19-1020	ST-18-1020	ST-17-1020	ST-16-1020	ST-15-1020	ST-14-1020	ST-13-1020	ST-12-1020	ST-11-1020	ST-10-1020	ST-9-1020	ST-8-1020	ST-7-1020	ST-6-1020	ST-5-1020	ST-4-1020	ST-3-1020	ST-2-1020	ST-1-1020
-------------	-------------	-------------	-------------	-------------	-------------	-------------	-------------	-------------	-------------	-------------	-------------	-------------	-------------	-------------	-------------	-------------	-------------	-------------	-------------	-------------	-------------	-------------	-------------	-------------	-------------	-------------	-------------	-------------	-------------	-------------	-------------	-------------	-------------	-------------	-------------	-------------	-------------	-------------	-------------	-------------	-------------	-------------	-------------	-------------	-------------	-------------	-------------	-------------	-------------	-------------	-------------	-------------	-------------	-------------	-------------	-------------	-------------	-------------	-------------	-------------	-------------	-------------	-------------	-------------	-------------	-------------	-------------	-------------	-------------	-------------	-------------	-------------	-------------	-------------	-------------	-------------	-------------	-------------	-------------	-------------	-------------	-------------	-------------	-------------	-------------	-------------	-------------	-------------	------------	------------	------------	------------	------------	------------	------------	------------	------------	------------	------------	------------	------------	------------	------------	------------	------------	------------	------------	------------	------------	------------	------------	------------	------------	------------	------------	------------	------------	------------	------------	------------	------------	------------	------------	------------	------------	------------	------------	------------	------------	------------	------------	------------	------------	------------	------------	------------	------------	------------	------------	------------	------------	------------	------------	------------	------------	------------	------------	------------	------------	------------	------------	------------	------------	------------	------------	------------	------------	------------	------------	------------	------------	------------	------------	------------	------------	------------	------------	------------	------------	------------	------------	------------	------------	------------	------------	------------	------------	------------	-----------	-----------	-----------	-----------	-----------	-----------	-----------	-----------	-----------

**LIST OF MATERIALS**

**STEC CORPORATION**  
P.O. BOX 1020  
Ft. WOLTERS, TX

**INSTALLATION**

ROLL SERVO

DATE: 7/6/12

SCALE: 1/1

SHEET: 1 OF 1

REV	DESCRIPTION	DATE	APPROVED
1	RELEASED FOR TO	3-27-82	R. WAND
A	REV PER FECD # 195	1-7-82	B. LUKASIK
B	REV PER FECD # 240	3-24-82	Z. PERKINS
C	REV PER FECD 381	6-10-84	D. J. D.
D	REV PER FECD 453	10-28-84	D. J. D.
E	REV PER FECD 1405	1-21-85	D. J. D.
F	REV PER FECD 1571	2-15-84	D. J. D.
G	REV PER FECD 1844	12-7-95	D. J. D.