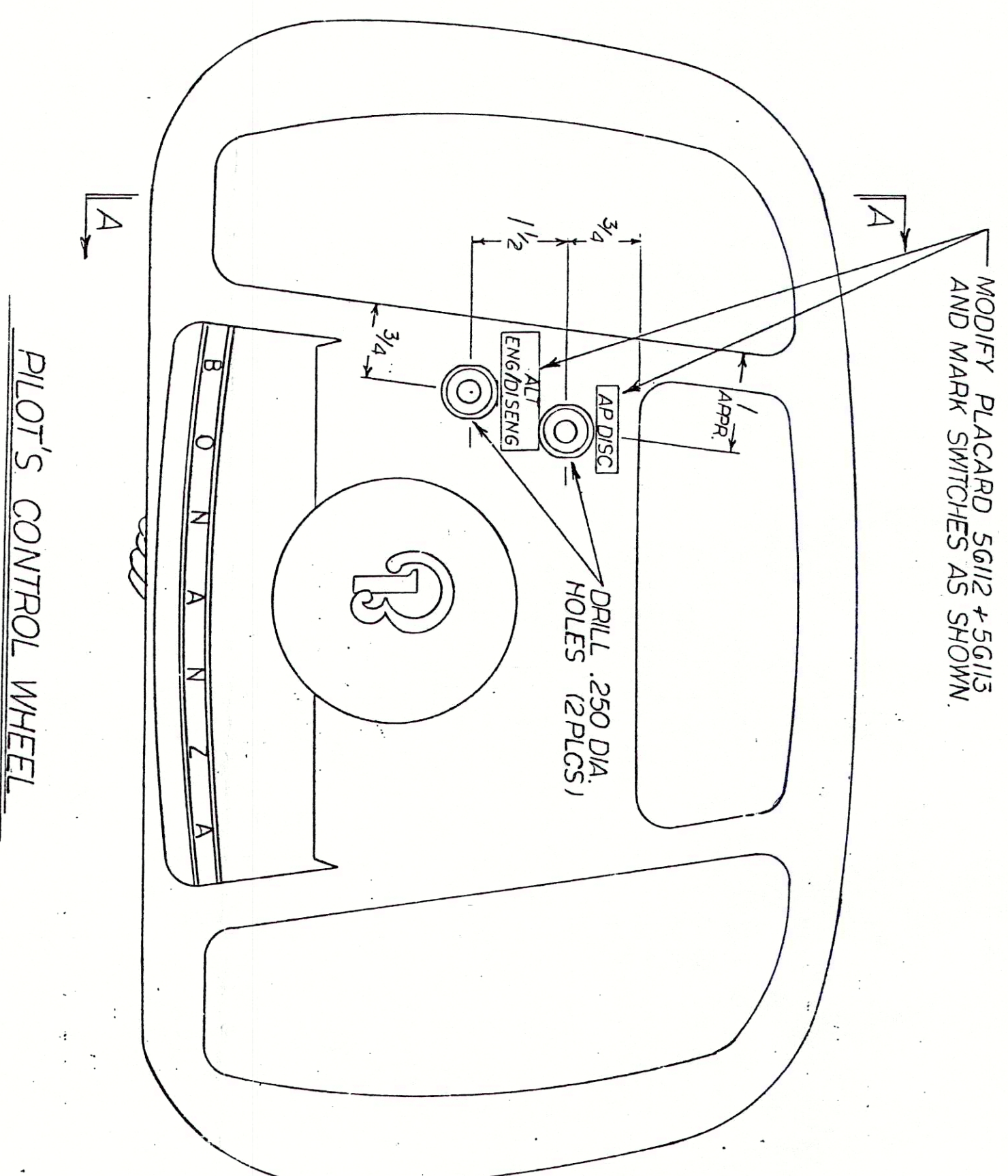
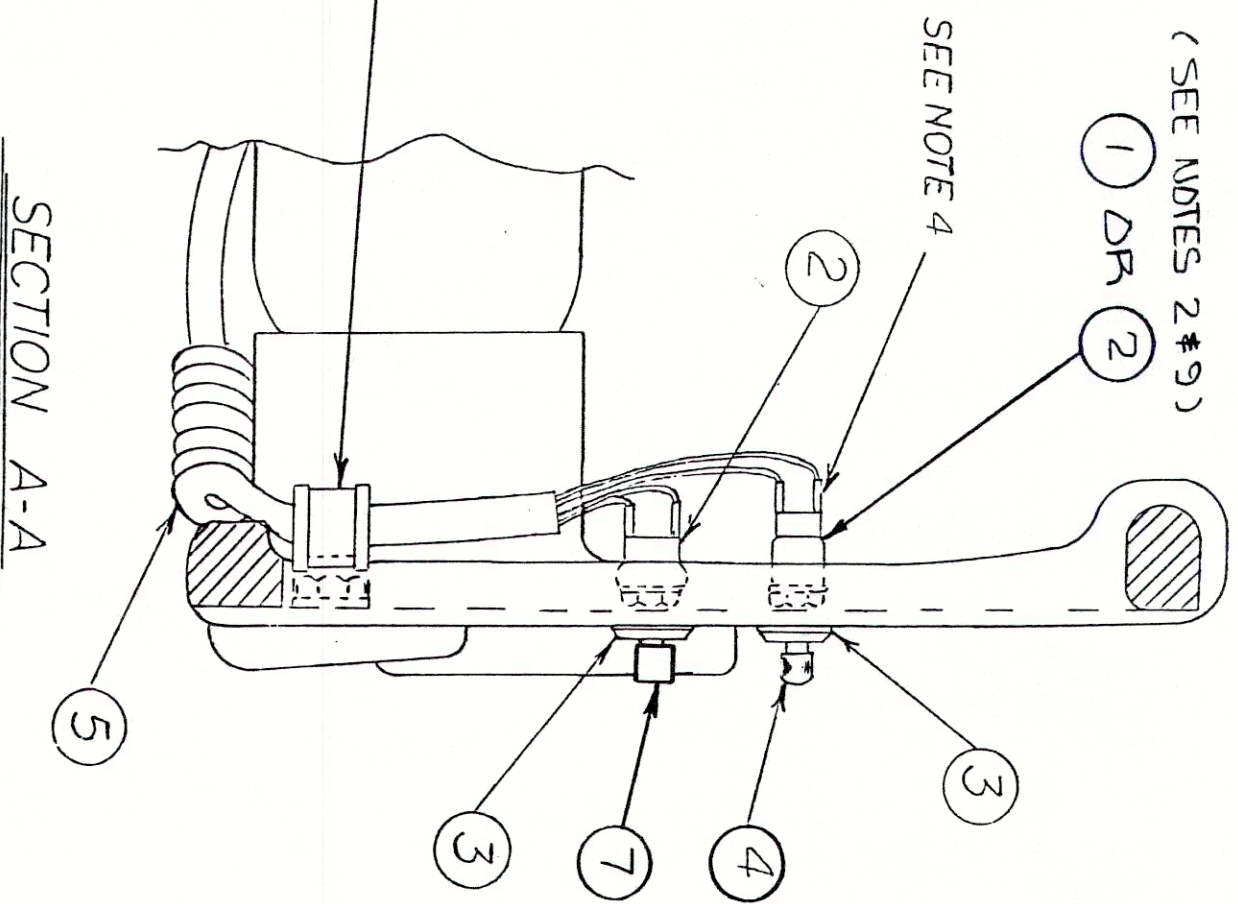


REV	DESCRIPTION	DATE	BY
1	ISSUED PER E.O. 1077	7-11-53	W
A	REV. PER FECD 1362	1-15-57	W
B	REV. PER FECD 2121	12-1-57	W



NOTES:

1. THE AP DISCONNECT SWITCH AND ALTITUDE ENGAGE/DISENGAGE SWITCH SHOULD BOTH BE LOCATED ON THE LEFT SIDE OF THE PILOT'S CONTROL WHEEL.
2. THE AP DISC & ALT ENGAGE/DISENGAGE SWITCHES MAY BE ANY OPTIONAL FUNCTIONAL CAPS SHOULD BE TAKEN TO INSTALL THE BEING INSTALLED CAPS SHOULD BE TAKEN TO INSTALL THE CORRECT PART NUMBER FOR THE FUNCTION DESIRED.
3. DRILL TWO .250 DIA. HOLES THRU CONTROL WHEEL IN APPROX. LOCATION SHOWN TO ACCEPT ITEMS 1+2) SWITCHES.
4. STRIP OUTER COATING FROM ITEM 5) COIL CORD APPROX. 2 IN. BACK FROM END. SOLDER WIRES TO SWITCH TERMINALS. COVER ALL CONNECTIONS WITH HEAT SHRINK TUBING.
5. CLAMP COIL CORD TO EXISTING STUD ON BACK OF CONTROL WHEEL WITH AN-742 CUSHION CLAMP AND EXISTING NUT AND WASHER REMOVED FROM STUD.
6. INSTALL SWITCH PLUNGER CAP USING A SMALL AMOUNT OF EXISTING GLO ADHESIVE.
7. ROUTE COIL CORD TO CONTROL YOKE ADJACENT TO CONTROL WHEEL HUB AND SECURE WITH AN-742 CUSHION CLAMP. CONTINUE ROUTING TO CENTER OF YOKE AND TO INSTRUMENT PANEL. DRILL 5/16 DIA. HOLES IN INSTRUMENT PANEL APPROX. 1.5 - 2 IN. FROM CONTROL YOKE STAFF AND GROMMET ITEM 9) GROMMET. ROUTE COIL CORD TO PANEL AND THRU GROMMET AND SECURE WITH AN-742 CUSHION CLAMP.

8. EXERCISE CONTROLS THRU FULL TRAVEL IN ROLL AND PITCH AND DETERMINE THAT THE COIL CORD INSTALLATION DOES NOT CAUSE CONTROL RESTRICTION OR BINDING.

NOT SHOWN

SEE NOTE 9  
SEE NOTE 9

9. REFER TO PARTS LIST SECTION OF INSTALLATION BULLETIN TO DETERMINE SPECIFIC PART NUMBERS REQUIRED.

ITEM	QTY	PART NUMBER	DESCRIPTION
1	1	5838	SWITCH PLUNGER CAP
2	1	1G14	GROMMET MS35489-G
3	5	3953-1	COIL CORD
4	1	5604	SWITCH PLUNGER CAP
5	2	1454	DECORATIVE NUT
6	1	3532	SWITCH MOU. N.O.
7	1	3507	SWITCH MOU. N.C.

LIST OF MATERIALS

ITEM	QTY	PART NUMBER	DESCRIPTION
1	1	ST-758	INSTRUMENT PANEL
2	1	ST-187-492	INSTRUMENT PANEL
3	1	ST-188-492	INSTRUMENT PANEL
4	1	ST-187-492	INSTRUMENT PANEL

ITEM	QTY	PART NUMBER	DESCRIPTION
1	1	ST-758	INSTRUMENT PANEL
2	1	ST-187-492	INSTRUMENT PANEL
3	1	ST-188-492	INSTRUMENT PANEL
4	1	ST-187-492	INSTRUMENT PANEL

ITEM	QTY	PART NUMBER	DESCRIPTION
1	1	ST-758	INSTRUMENT PANEL
2	1	ST-187-492	INSTRUMENT PANEL
3	1	ST-188-492	INSTRUMENT PANEL
4	1	ST-187-492	INSTRUMENT PANEL

ITEM	QTY	PART NUMBER	DESCRIPTION
1	1	ST-758	INSTRUMENT PANEL
2	1	ST-187-492	INSTRUMENT PANEL
3	1	ST-188-492	INSTRUMENT PANEL
4	1	ST-187-492	INSTRUMENT PANEL

ITEM	QTY	PART NUMBER	DESCRIPTION
1	1	ST-758	INSTRUMENT PANEL
2	1	ST-187-492	INSTRUMENT PANEL
3	1	ST-188-492	INSTRUMENT PANEL
4	1	ST-187-492	INSTRUMENT PANEL

ITEM	QTY	PART NUMBER	DESCRIPTION
1	1	ST-758	INSTRUMENT PANEL
2	1	ST-187-492	INSTRUMENT PANEL
3	1	ST-188-492	INSTRUMENT PANEL
4	1	ST-187-492	INSTRUMENT PANEL

ITEM	QTY	PART NUMBER	DESCRIPTION
1	1	ST-758	INSTRUMENT PANEL
2	1	ST-187-492	INSTRUMENT PANEL
3	1	ST-188-492	INSTRUMENT PANEL
4	1	ST-187-492	INSTRUMENT PANEL

ITEM	QTY	PART NUMBER	DESCRIPTION
1	1	ST-758	INSTRUMENT PANEL
2	1	ST-187-492	INSTRUMENT PANEL
3	1	ST-188-492	INSTRUMENT PANEL
4	1	ST-187-492	INSTRUMENT PANEL

ITEM	QTY	PART NUMBER	DESCRIPTION
1	1	ST-758	INSTRUMENT PANEL
2	1	ST-187-492	INSTRUMENT PANEL
3	1	ST-188-492	INSTRUMENT PANEL
4	1	ST-187-492	INSTRUMENT PANEL

ITEM	QTY	PART NUMBER	DESCRIPTION
1	1	ST-758	INSTRUMENT PANEL
2	1	ST-187-492	INSTRUMENT PANEL
3	1	ST-188-492	INSTRUMENT PANEL
4	1	ST-187-492	INSTRUMENT PANEL

ITEM	QTY	PART NUMBER	DESCRIPTION
1	1	ST-758	INSTRUMENT PANEL
2	1	ST-187-492	INSTRUMENT PANEL
3	1	ST-188-492	INSTRUMENT PANEL
4	1	ST-187-492	INSTRUMENT PANEL

ITEM	QTY	PART NUMBER	DESCRIPTION
1	1	ST-758	INSTRUMENT PANEL
2	1	ST-187-492	INSTRUMENT PANEL
3	1	ST-188-492	INSTRUMENT PANEL
4	1	ST-187-492	INSTRUMENT PANEL

ITEM	QTY	PART NUMBER	DESCRIPTION
1	1	ST-758	INSTRUMENT PANEL
2	1	ST-187-492	INSTRUMENT PANEL
3	1	ST-188-492	INSTRUMENT PANEL
4	1	ST-187-492	INSTRUMENT PANEL

ITEM	QTY	PART NUMBER	DESCRIPTION
1	1	ST-758	INSTRUMENT PANEL
2	1	ST-187-492	INSTRUMENT PANEL
3	1	ST-188-492	INSTRUMENT PANEL
4	1	ST-187-492	INSTRUMENT PANEL

ITEM	QTY	PART NUMBER	DESCRIPTION
1	1	ST-758	INSTRUMENT PANEL
2	1	ST-187-492	INSTRUMENT PANEL
3	1	ST-188-492	INSTRUMENT PANEL
4	1	ST-187-492	INSTRUMENT PANEL

ITEM	QTY	PART NUMBER	DESCRIPTION
1	1	ST-758	INSTRUMENT PANEL
2	1	ST-187-492	INSTRUMENT PANEL
3	1	ST-188-492	INSTRUMENT PANEL
4	1	ST-187-492	INSTRUMENT PANEL

ITEM	QTY	PART NUMBER	DESCRIPTION
1	1	ST-758	INSTRUMENT PANEL
2	1	ST-187-492	INSTRUMENT PANEL
3	1	ST-188-492	INSTRUMENT PANEL
4	1	ST-187-492	INSTRUMENT PANEL

ITEM	QTY	PART NUMBER	DESCRIPTION
1	1	ST-758	INSTRUMENT PANEL
2	1	ST-187-492	INSTRUMENT PANEL
3	1	ST-188-492	INSTRUMENT PANEL
4	1	ST-187-492	INSTRUMENT PANEL

ITEM	QTY	PART NUMBER	DESCRIPTION
1	1	ST-758	INSTRUMENT PANEL
2	1	ST-187-492	INSTRUMENT PANEL
3	1	ST-188-492	INSTRUMENT PANEL
4	1	ST-187-492	INSTRUMENT PANEL

ITEM	QTY	PART NUMBER	DESCRIPTION
1	1	ST-758	INSTRUMENT PANEL
2	1	ST-187-492	INSTRUMENT PANEL
3	1	ST-188-492	INSTRUMENT PANEL
4	1	ST-187-492	INSTRUMENT PANEL

ITEM	QTY	PART NUMBER	DESCRIPTION
1	1	ST-758	INSTRUMENT PANEL
2	1	ST-187-492	INSTRUMENT PANEL
3	1	ST-188-492	INSTRUMENT PANEL
4	1	ST-187-492	INSTRUMENT PANEL

ITEM	QTY	PART NUMBER	DESCRIPTION
1	1	ST-758	INSTRUMENT PANEL
2	1	ST-187-492	INSTRUMENT PANEL
3	1	ST-188-492	INSTRUMENT PANEL
4	1	ST-187-492	INSTRUMENT PANEL

ITEM	QTY	PART NUMBER	DESCRIPTION
1	1	ST-758	INSTRUMENT PANEL
2	1	ST-187-492	INSTRUMENT PANEL
3	1	ST-188-492	INSTRUMENT PANEL
4	1	ST-187-492	INSTRUMENT PANEL

ITEM	QTY	PART NUMBER	DESCRIPTION
1	1	ST-758	INSTRUMENT PANEL
2	1	ST-187-492	INSTRUMENT PANEL
3	1	ST-188-492	INSTRUMENT PANEL
4	1	ST-187-492	INSTRUMENT PANEL

ITEM	QTY	PART NUMBER	DESCRIPTION
1	1	ST-758	INSTRUMENT PANEL
2	1	ST-187-492	INSTRUMENT PANEL
3	1	ST-188-492	INSTRUMENT PANEL
4	1	ST-187-492	INSTRUMENT PANEL

ITEM	QTY	PART NUMBER	DESCRIPTION
1	1	ST-758	INSTRUMENT PANEL
2	1	ST-187-492	INSTRUMENT PANEL
3	1	ST-188-492	INSTRUMENT PANEL
4	1	ST-187-492	INSTRUMENT PANEL

ITEM	QTY	PART NUMBER	DESCRIPTION
1	1	ST-758	INSTRUMENT PANEL
2	1	ST-187-492	INSTRUMENT PANEL
3	1	ST-188-492	INSTRUMENT PANEL
4	1	ST-187-492	INSTRUMENT PANEL

ITEM	QTY	PART NUMBER	DESCRIPTION
1	1	ST-758	INSTRUMENT PANEL
2	1	ST-187-492	INSTRUMENT PANEL
3	1	ST-188-492	INSTRUMENT PANEL
4	1	ST-187-492	INSTRUMENT PANEL

ITEM	QTY	PART NUMBER	DESCRIPTION
1	1	ST-758	INSTRUMENT PANEL
2	1	ST-187-492	INSTRUMENT PANEL
3	1	ST-188-492	INSTRUMENT PANEL
4	1	ST-187-492	INSTRUMENT PANEL

ITEM	QTY	PART NUMBER	DESCRIPTION
1	1	ST-758	INSTRUMENT PANEL
2	1	ST-187-492	INSTRUMENT PANEL
3	1	ST-188-492	INSTRUMENT PANEL
4	1	ST-187-492	INSTRUMENT PANEL

ITEM	QTY	PART NUMBER	DESCRIPTION
1	1	ST-758	INSTRUMENT PANEL
2	1	ST-187-492	INSTRUMENT PANEL
3	1	ST-188-492	INSTRUMENT PANEL
4	1	ST-187-492	INSTRUMENT PANEL

ITEM	QTY	PART NUMBER	DESCRIPTION
1	1	ST-758	INSTRUMENT PANEL
2	1	ST-187-492	INSTRUMENT PANEL
3	1	ST-188-492	INSTRUMENT PANEL
4	1	ST-187-492	INSTRUMENT PANEL

ITEM	QTY	PART NUMBER	DESCRIPTION
1	1	ST-758	INSTRUMENT PANEL
2	1	ST-187-492	INSTRUMENT PANEL
3	1	ST-188-492	INSTRUMENT PANEL
4	1	ST-187-492	INSTRUMENT PANEL

ITEM	QTY	PART NUMBER	DESCRIPTION
1	1	ST-758	INSTRUMENT PANEL
2	1	ST-187-492	INSTRUMENT PANEL
3	1	ST-188-492	INSTRUMENT PANEL
4	1	ST-187-492	INSTRUMENT PANEL

ITEM	QTY	PART NUMBER	DESCRIPTION
1	1	ST-758	INSTRUMENT PANEL
2	1	ST-187-492	INSTRUMENT PANEL
3	1	ST-188-492	INSTRUMENT PANEL
4	1	ST-187-492	INSTRUMENT PANEL

ITEM	QTY	PART NUMBER	DESCRIPTION
1	1	ST-758	INSTRUMENT PANEL
2	1	ST-187-492	INSTRUMENT PANEL
3	1	ST-188-492	INSTRUMENT PANEL
4	1	ST-187-492	INSTRUMENT PANEL

ITEM	QTY	PART NUMBER	DESCRIPTION
1	1	ST-758	INSTRUMENT PANEL
2	1	ST-187-492	INSTRUMENT PANEL
3	1	ST-188-492	INSTRUMENT PANEL
4	1	ST-187-492	INSTRUMENT PANEL

ITEM	QTY	PART NUMBER	DESCRIPTION
1	1	ST-758	INSTRUMENT PANEL
2	1	ST-187-492	INSTRUMENT PANEL
3	1	ST-188-492	INSTRUMENT PANEL
4	1	ST-187-492	INSTRUMENT PANEL

ITEM	QTY	PART NUMBER	DESCRIPTION
1	1	ST-758	INSTRUMENT PANEL
2	1	ST-187-492	INSTRUMENT PANEL
3	1	ST-188-492	INSTRUMENT PANEL
4	1	ST-187-492	INSTRUMENT PANEL

ITEM	QTY	PART NUMBER	DESCRIPTION
1	1	ST-758	INSTRUMENT PANEL</