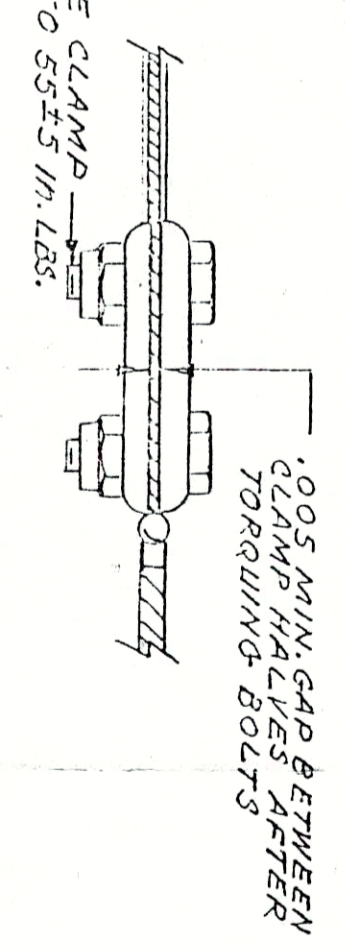
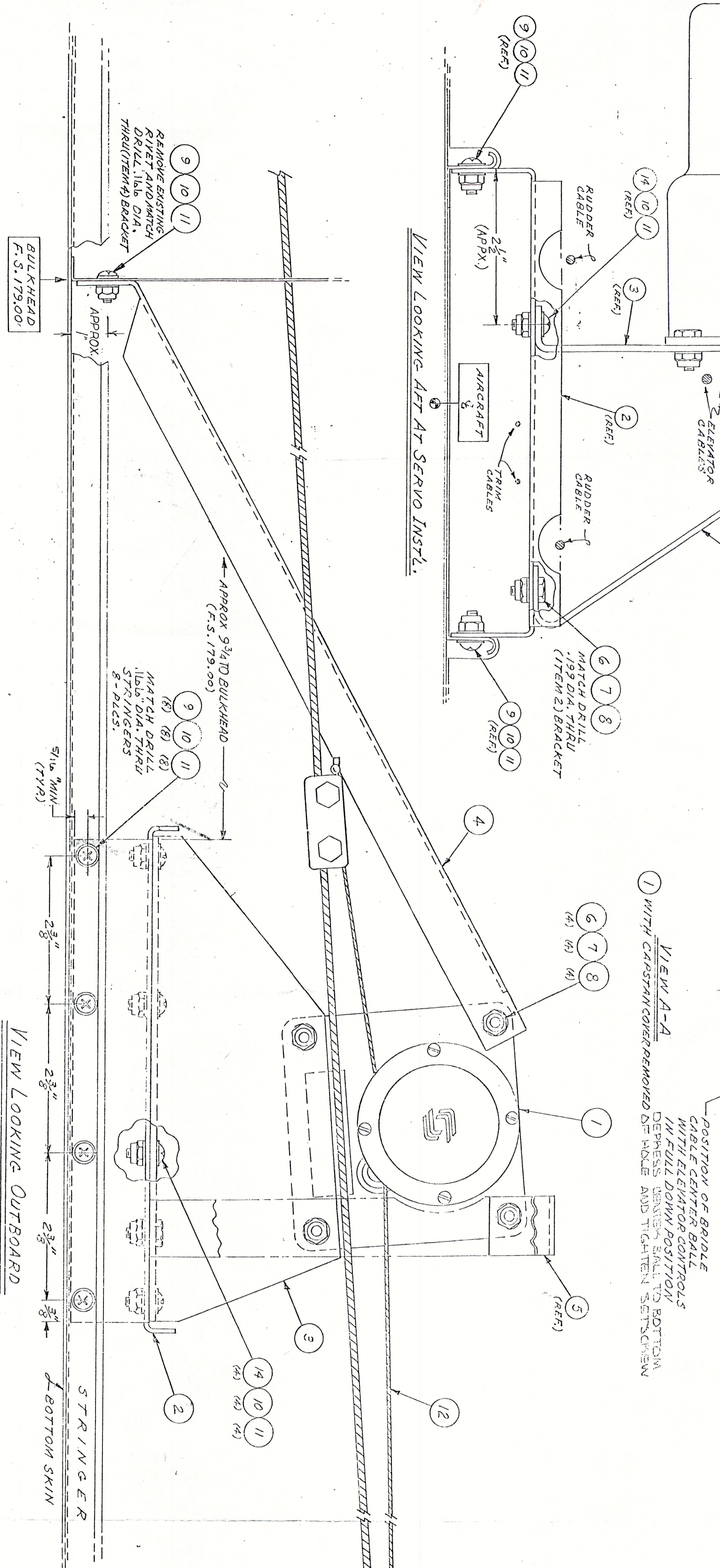
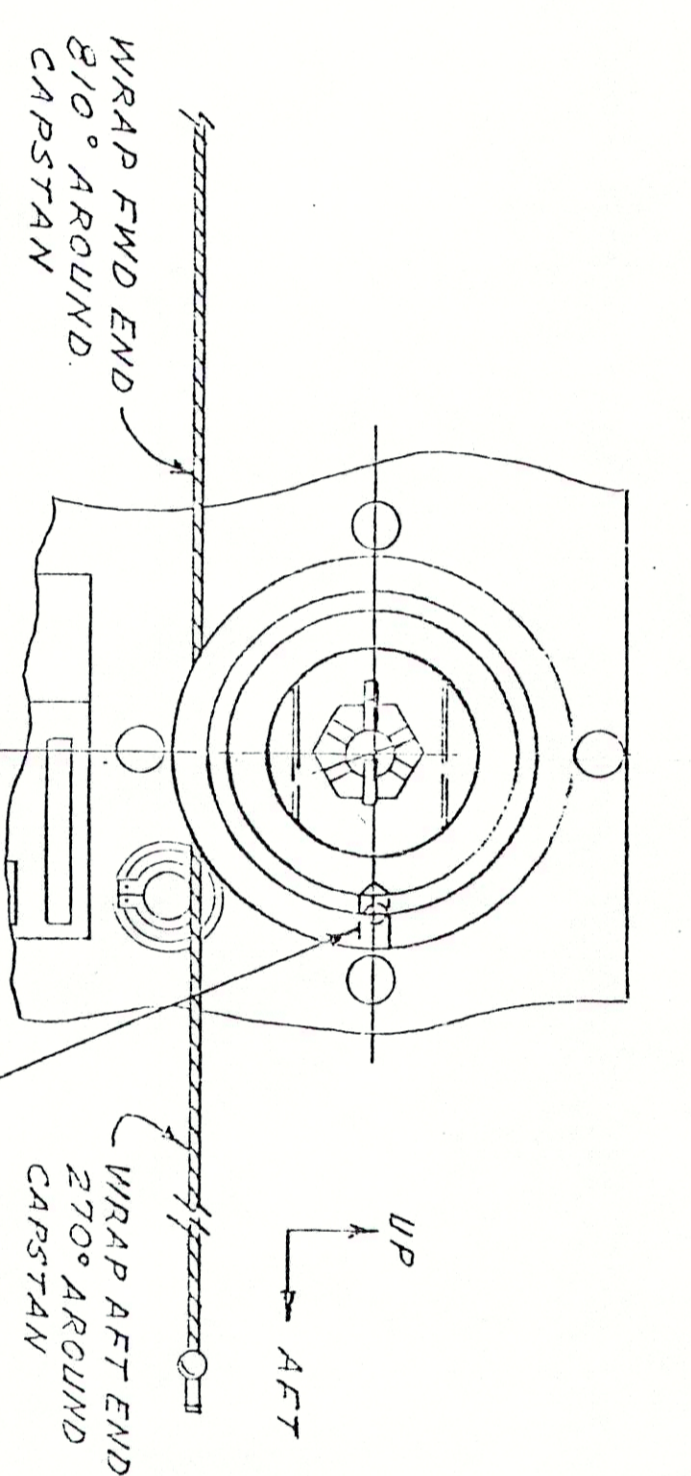
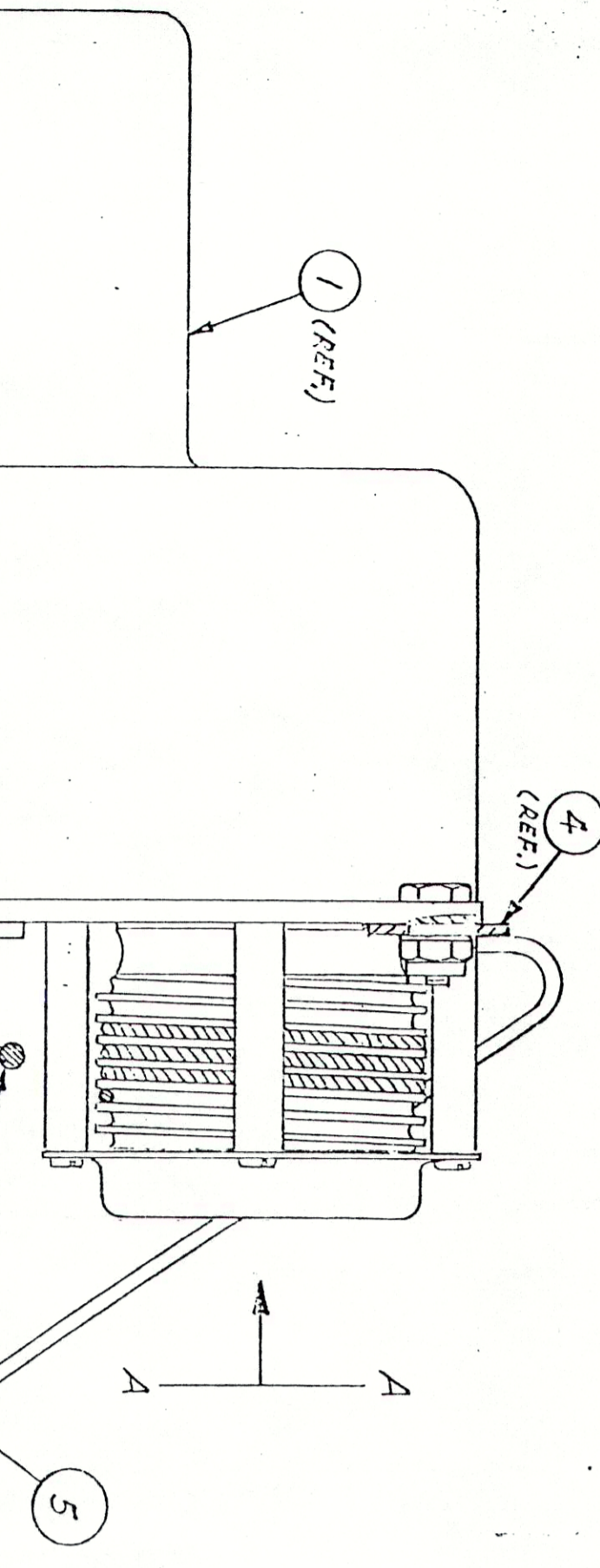


REV	DESCRIPTION	DATE	APPROVED
1	ISSUED PER ITCO # 369	9-4-50	R. W. WARD
2	REV PER ITCO 575	5-31-51	V. J. WARD
3	REV PER ITCO 1415-A	4-23-53	J. T.
4	REV PER ITCO 1824-A	12-7-55	J. T.



- NOTES:
1. PRIOR TO INSTALLING PITCH SERVO: ADJUST THE CLUTCH TORQUE AND DETERMINE KOPER DIRECTION OF CAPSTAN ROTATION IN ACCORDANCE WITH INSTALLATION BULLETIN INSTRUCTIONS.
 2. WRAP BRIDLE CABLE ON SERVO CAPSTAN AS SHOWN IN VIEW A-A AND INSTALL CAPSTAN CABLE GUARDS AND COVER. USE SCREWS IN TOP OF CABLE GUARDS FOR INSTALLATION PURPOSES AND TIGHTEN ONLY SING. AGAINST SERVO BASE PLATE.
 3. LOCATE SERVO SO THAT ELEVATOR CABLE IS CENTERED ON CAPSTAN WITH A MINIMUM OF 1/8" INCH CLEARANCE BETWEEN CABLE AND CAPSTAN CABLE GUARD.
 4. MAINTAIN A MINIMUM OF 5/16" INCH EDGE DISTANCE WHEN DRILLING ATTACHING HOLES IN MOUNTING BRACKETS.
 5. CHECK ELEVATOR CONTROL SYSTEM TRAVELS AND CABLE TENSION, AND ADJUST AS NECESSARY TO WITHIN TOLERANCES SPECIFIED BY THE MANUFACTURER. MANUFACTURER'S RECOMMENDATIONS FOR THE AIRFRAME CAN BE ROTATED ON ELEVATOR CABLE TO ALIGN BRIDLE CABLE WITH CAPSTAN GROOVES.

QTY	PART NUMBER	DESCRIPTION
4	1108C832-84	SCREW, AN525-832R8
2	13	G/2 I
1	1001-1	BRIDLE CABLE ASSY.
13	1406C835A	NUT, AN365-832
9	1201C8-031A	WASHER, AN525-832 RT
5	1406G032A	NUT, AN365-1032
5	1406G032A	WASHER, AN525-1032
5	1301C032-84	BOLT, AN3-44
1	6062	BRACKET
1	6061	BRACKET
1	6059	BRACKET
1	0107-P4	PITCH SERVO
1		

SYMBOL	DESCRIPTION	REVISION	DATE	BY	CHKD
ST-141	W/O				
ST-142	W/O				
ST-143	W/O				
ST-144	W/O				
ST-145	W/O				
ST-146	W/O				
ST-147	W/O				
ST-148	W/O				
ST-149	W/O				
ST-150	W/O				

LIST OF MATERIALS
S-TEC CORPORATION
 FT. WOLTERS, TX
 DRAWING NO. 1633
 SHEET 10 of 1