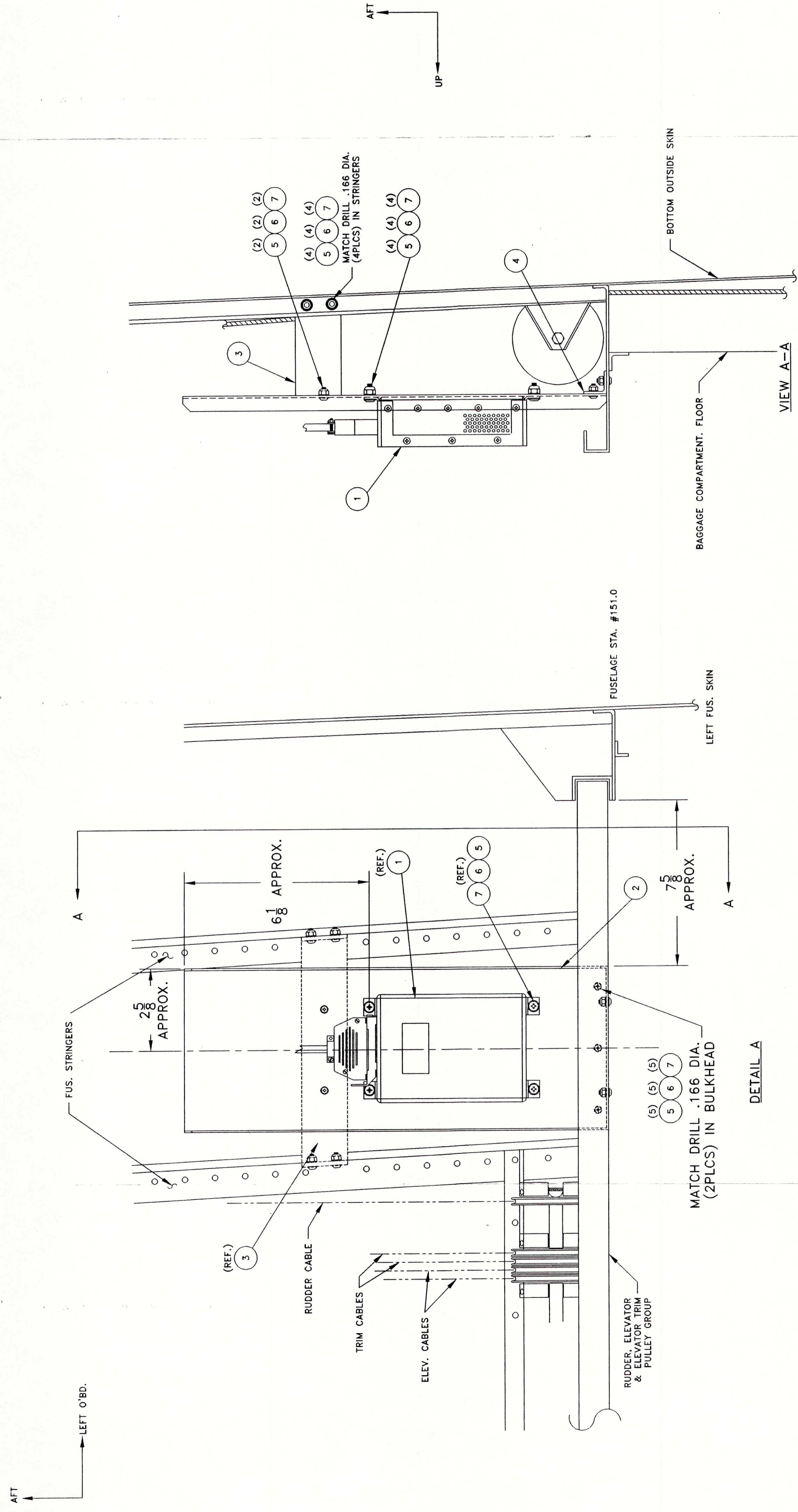


REV	DESCRIPTION	DATE	APPROVED
1	RELEASED PER E.O. 12812	2-16-83	1/2/2/2

REVISIONS



VIEW LOOKING DOWN ON AREA JUST AFT OF BAGGAGE AREA

- NOTES:
1. ROUTE ELECTRICAL CABLE & SECURE I/A/W AC43.13-1A, CHAPTER 11, SECTION 7, PARA. 514.
 2. THE COMPUTER PART NUMBER FOR ANY PARTICULAR AIRCRAFT MODEL IS CALLED OUT IN THE PARTS LIST OF THE INSTALLATION BULLETIN FOR THAT SPECIFIC AIRCRAFT.
 3. MAINTAIN A MINIMUM OF 5/16 IN. EDGE DISTANCE WHEN DRILLING ATTACHING HOLES IN AIRCRAFT STRUCTURE AND BRACKETS, UNLESS OTHERWISE SPECIFIED.
 4. SECURE PITCH COMPUTER TO BRACKET WITH THE HARDWARE CALLED OUT.
 5. THE COMPUTER MUST BE INSTALLED WITH THE ATTACHING FLANGES DOWN AND MUST BE LEVEL WITH THE AIRCRAFT'S LATERAL AND LONGITUDINAL AXIS ±1°.

15	7	1201CB-031A	WASHERS, AN960-B
15	6	1108CB32-7A	SCREW, AN525-832R7
15	5	1408CB32A	NUT, AN365-832
1	4	6015	BRACKET
1	3	6016	BRACKET
1	2	6014	BRACKET MOUNTING
1	1	SEE NOTE 2	PITCH COMPUTER

LIST OF MATERIALS

DESCRIPTION

QTY

ITEM

PART NUMBER

APPROVAL

DATE

DRAWN D. HARRIS

CHECKED

ENGINEER

APPROVED

DATE

DATE

DATE

DATE

DATE

DATE

DATE

DATE

DATE

1/21/83

2/12/83

2/12/83

2/12/83

2/12/83

2/12/83

2/12/83

2/12/83

2/12/83

2/12/83

2/12/83

2/12/83

2/12/83

2/12/83

2/12/83

2/12/83

2/12/83

2/12/83

2/12/83

2/12/83

2/12/83

2/12/83

2/12/83

2/12/83

2/12/83

2/12/83

2/12/83

2/12/83

2/12/83

2/12/83

2/12/83

2/12/83

2/12/83

2/12/83

2/12/83

2/12/83

2/12/83

2/12/83

2/12/83

2/12/83

2/12/83

2/12/83

2/12/83

2/12/83

2/12/83

2/12/83

2/12/83

2/12/83

2/12/83

2/12/83

2/12/83

2/12/83

2/12/83

2/12/83

2/12/83

2/12/83

2/12/83

2/12/83

2/12/83

2/12/83

2/12/83

2/12/83

2/12/83

2/12/83

2/12/83

2/12/83

2/12/83

2/12/83

2/12/83

2/12/83

2/12/83

2/12/83

2/12/83

2/12/83

2/12/83

2/12/83

2/12/83

2/12/83

2/12/83

2/12/83

2/12/83

2/12/83

2/12/83

2/12/83

2/12/83

2/12/83

2/12/83

2/12/83

2/12/83

2/12/83

2/12/83

2/12/83

2/12/83

2/12/83

2/12/83

2/12/83

2/12/83

2/12/83

2/12/83

2/12/83

2/12/83

2/12/83

2/12/83

2/12/83

2/12/83

2/12/83

2/12/83

2/12/83

2/12/83

2/12/83

2/12/83

2/12/83

2/12/83

2/12/83

2/12/83

2/12/83

2/12/83

2/12/83

2/12/83

2/12/83

2/12/83

2/12/83

2/12/83

2/12/83

2/12/83

2/12/83

2/12/83

2/12/83

2/12/83

2/12/83

2/12/83

2/12/83

2/12/83

2/12/83

2/12/83

2/12/83

2/12/83

2/12/83

2/12/83

2/12/83

2/12/83

2/12/83

2/12/83

2/12/83

2/12/83

2/12/83

2/12/83

2/12/83

2/12/83

2/12/83

2/12/83

2/12/83

2/12/83

2/12/83

2/12/83

2/12/83

2/12/83

2/12/83

2/12/83

2/12/83

2/12/83

2/12/83

2/12/83

2/12/83

2/12/83

2/12/83

2/12/83

2/12/83

2/12/83

2/12/83

2/12/83

2/12/83

2/12/83

2/12/83

2/12/83

2/12/83

2/12/83

2/12/83

2/12/83

2/12/83

2/12/83

2/12/83

2/12/83

2/12/83

2/12/83

2/12/83

2/12/83

2/12/83

2/12/83

2/12/83

2/12/83

2/12/83

2/12/83

2/12/83

2/12/83

2/12/83

2/12/83

2/12/83

2/12/83

2/12/83

2/12/83

2/12/83

2/12/83

2/12/83

2/12/83

2/12/83

2/12/83

2/12/83

2/12/83

2/12/83

2/12/83

2/12/83

2/12/83

2/12/83

2/12/83

2/12/83

2/12/83

2/12/83

2/12/83

2/12/83

2/12/83

2/12/83

2/12/83

2/12/83

2/12/83

2/12/83

2/12/83

2/12/83

2/12/83

2/12/83

2/12/83

2/12/83

2/12/83

2/12/83

2/12/83

2/12/83

2/12/83

2/12/83

2/12/83

2/12/83